



# SOLIS

Accessories for SOLIS  
Integrated Solar Lighting system

Model 031 - 050 - 080 - 130

- Quick, easy and secure installation

## Integrated solar lighting system Installation Accessories

### Screwed Piles (Permanent Installation):

#### Advantages:

- Good performances in all types of soils
- Precise leveling
- Easy installation
- Can be moved to another location.

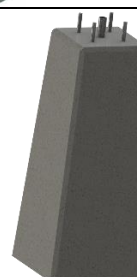


---

### Concrete Pile (Permanent Installation):

#### Advantages:

- Chemical and biological resistant
- Precise leveling



---

### Jersey Barriers (Temporary Installation):

#### Perfect for:

- Lighting diverted roads around a construction site for incoming traffic



---

### Temporary Bases (Temporary Installation):

#### Perfect for:

- Lighting diverted paths around a construction site for pedestrians
- Temporary parking lighting

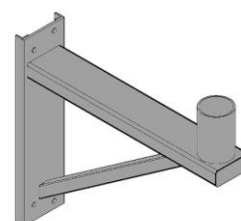


---

### Wood Post Adapter:

#### Perfect for:

- Wood post installation



Contact SOLIS for more information:

Montreal area : +1 514 716 4465    Toll free : +1 888 262-9875

info@solis-energy.ca    solis-energy.ca